



Welcome!



Life in Y5

- Homework four times per week (40-50 minutes per day)
- Working towards being a free reader
- Permission to go home (email the office/complete the link)
- Christmas Service



Maths

- Calculation policy:
<http://www.cathedralprimaryschool.com/maths/calculations/>
- Maths each morning for one hour
- Accompanying maths homework
- Times Tables Rockstars
- We cover arithmetic and reasoning methods



Going home

- Please ensure that you have filled out the form giving permission for your child to go home on their own
- Contact the office if there are any changes to the usual collection/walking home
- If your child is walking home on their own, please ensure they know what to do (meet you at the bus stop, walk around to Little Dorrit etc)
- Your child cannot leave the school grounds without this permission. An adult will need to be there to collect them. **We cannot let them walk around to meet you without permission to walk home alone.**



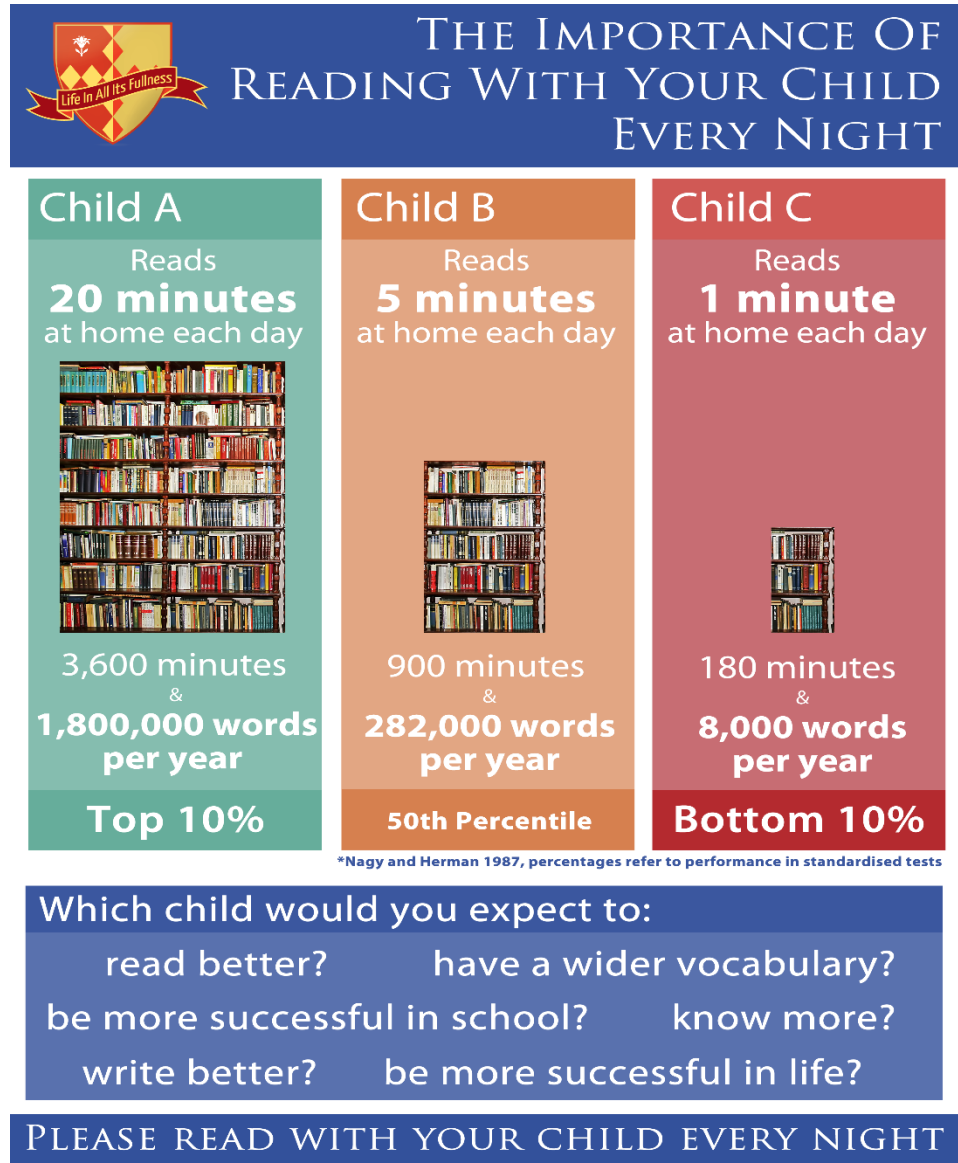
English

- English for one hour per day
- Dedicated grammar lessons
- Weekly spelling test
- Lessons taught through a variety of different texts and will focus on varied outcomes and genres
- Regular handwriting lessons (Cripps style)



Reading at Cathedral School

It is expected that you are listening to your child read every night, or at a minimum of three times a week, and commenting on their reading in their reading record. The reading records are then checked by an adult in school once a week. By reading regularly with your child, you are able to directly affect their progress within this area and upskill their understanding of vocabulary and spelling.





Ways to support at home – KS2

Reading Vipers

Vocabulary

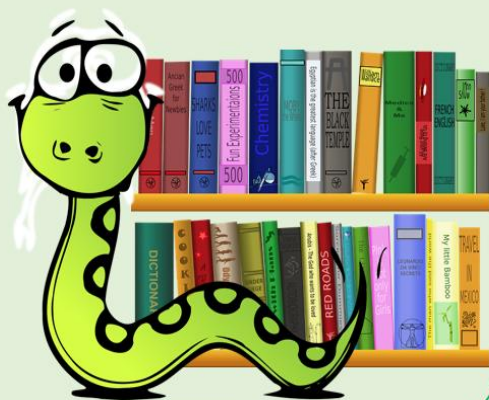
Infer

Predict

Explain

Retrieve

Sequence or Summarise



www.literacyshed.com (c) 2017

V	<ul style="list-style-type: none"> • What do the words and suggest about the character, setting and mood? • Which keyword tells you about the character/setting/mood? • Find and highlight the word that is closest in meaning to..... • Find a word or phrase which shows/suggests that.....
I	<ul style="list-style-type: none"> • How do these words make the reader feel? How does this paragraph suggest this? • What impression of do you get from these paragraphs? • What voice might these characters use? • Who is telling the story?
P	<ul style="list-style-type: none"> • From the cover what do you think this text is going to be about? • What is happening now? What happened before this? What will happen after? • What does this paragraph suggest will happen next? What makes you think this? • Do you think the choice of setting will influence how the plot develops?
E	<ul style="list-style-type: none"> • What structures has the author used? • What is the purpose of this text feature? • How does the author engage the reader here? • Which section was the most interesting/exciting part?
R	<ul style="list-style-type: none"> • How would you describe this story/text? What genre is it? How do you know? • What happened to...? What does.... do? How is? • What can you learn from from this section? • Give one example of.....
S	<ul style="list-style-type: none"> • What happened after? • What was the first thing that happened in the story? • Can you summarise in a sentence the opening/middle/end of the story? • In what order do these chapter headings come in the story?



Ways to support at home – KS2

Reading VIPERS

After listening to your child read at home, please ask your child a variety of VIPER questions as these will help to aid your child's comprehension of the text that they are reading. This is especially important when reading a 'Book Bingo' text as these books include a variety of rich language which your child might not have come across before.

Please note, that for your convenience, the VIPER questions can be found at the back of your child's reading record.



PSHE at Cathedral School

- PSHE is a focus on the School Development Plan this year, and is central to the educational entitlement of all children at Cathedral School.
- Every class has one PSHE lesson every week.
- At Cathedral School, Years 1-6 are taught PSHE across three core themes:
 - Health and Wellbeing
 - Relationships
 - Living in the Wider World





PSHE in Year 5

Class 5 will learn about:

- Physical health and well-being, focussing on how the media can manipulate images and that these images may not reflect reality.
- Keeping safe and managing risk, including perseverance and resilience.
- Mental health and emotional well-being, including learning about a wide range of emotions and feelings, and how we experience these.
- Identity, society and equality, including stereotypes, discrimination and prejudice.
- Keeping safe and managing risk, including how different drugs affect the body and how to deal with peer pressure.
- Keeping healthy, focussing on how to stay both mentally and physically healthy.